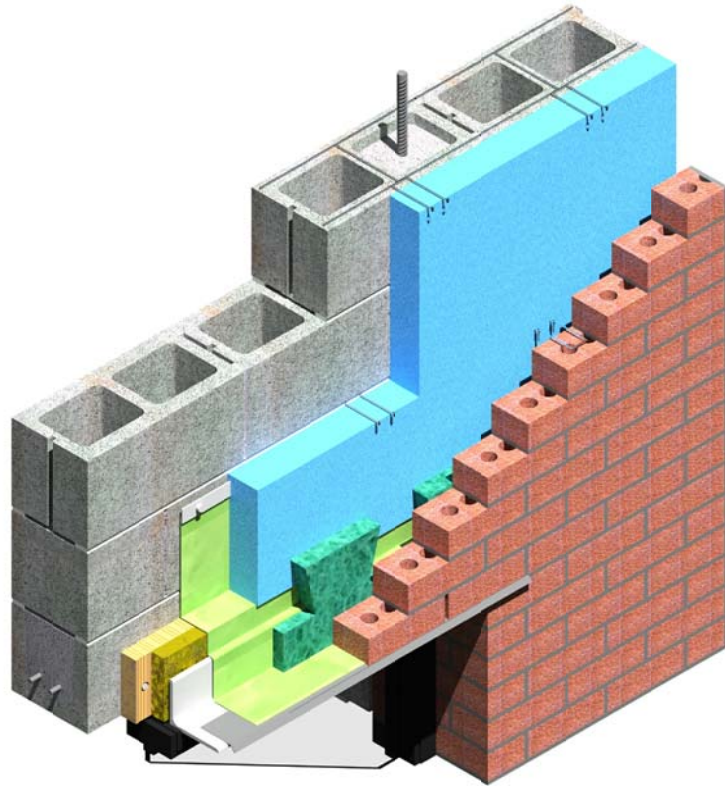


**NOTE:**

UNPROTECTED ALUMINUM DOOR AND WINDOW FRAMES CAN INTERACT WITH CEMENT-BASED MATERIALS AND INCUR DAMAGE. SEE PCA "MASONRY TODAY" VOLUME II, No. 1 FOR RECOMMENDATIONS.

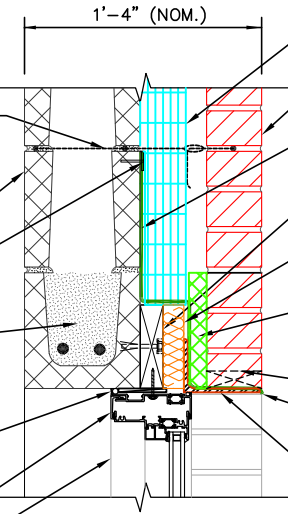
[www.cement.org/masonry/cc\\_al\\_frames.asp](http://www.cement.org/masonry/cc_al_frames.asp)



ISOMETRIC VIEW

**NOTE: MASONRY LINTEL MAY BE PREFABRICATED OR FIELD ASSEMBLED**

- LADDER TYPE HORIZONTAL JOINT REINF @ 16" O.C. W/ ADJUSTABLE VENEER ANCHORS
- 8" CMU BACK-UP
- 1 1/4" x 1/8" CONT. TERMINATION BAR W/ SEALANT
- LINTEL UNIT (W/ REINF. PER STRUCTURAL DESIGN) GROUTED SOLID
- SEALANT (BOTH SIDES) W/ BACKER ROD/ BOND BREAKER
- RECEPTOR FRAMING
- THERMALLY BROKEN ALUM. WINDOW FRAME



SECTION VIEW

- 1'-4" (NOM.)
- CAVITY WALL INSULATION, NOTCH AT TERMINATION BAR
- 4" BRICK (CLAY) VENEER
- FLEXIBLE MEMBRANE FLASHING W/ END DAMS
- 2x6 FIRE RETARDANT TREATED WOOD NAILER
- HIGH DENSITY MINERAL WOOL, TIGHT TO LINTEL
- DRAINAGE MESH
- WEEPS @ MAX. 32" O.C.
- TWO-PIECE FLASHING (SEE DETAIL 6D, SHEET A-7)
- GALVANIZED STEEL ANGLE ("LOOSE") LINTEL

3A  
A-1

SHORT SPAN MASONRY LINTEL FOR RECEPTOR STYLE WINDOWS  
**(PREFERRED LINTEL DETAIL)**

DAILEY ENGINEERING, INC.  
8485 STEPHENSON ROAD  
ONSTED, MI 49266  
PH. # (517) 467-9000



**111 MASONRY**  
Institute of Michigan

DETAIL SET CW.8 (CAVITY WALL)

IN CHARGE:	MIM
DRAWN:	M.W.F.
APPROVED:	T.A.D.
DATE:	08/08/2019
TITLE:	SHORT SPAN MASONRY LINTEL FOR RECEPTOR STYLE WINDOWS
SHEET:	A-4.1