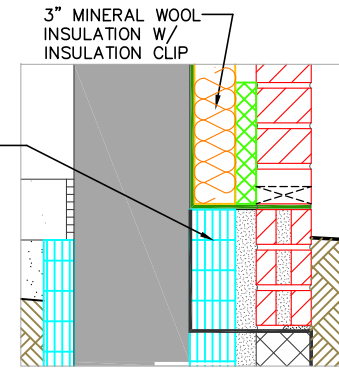
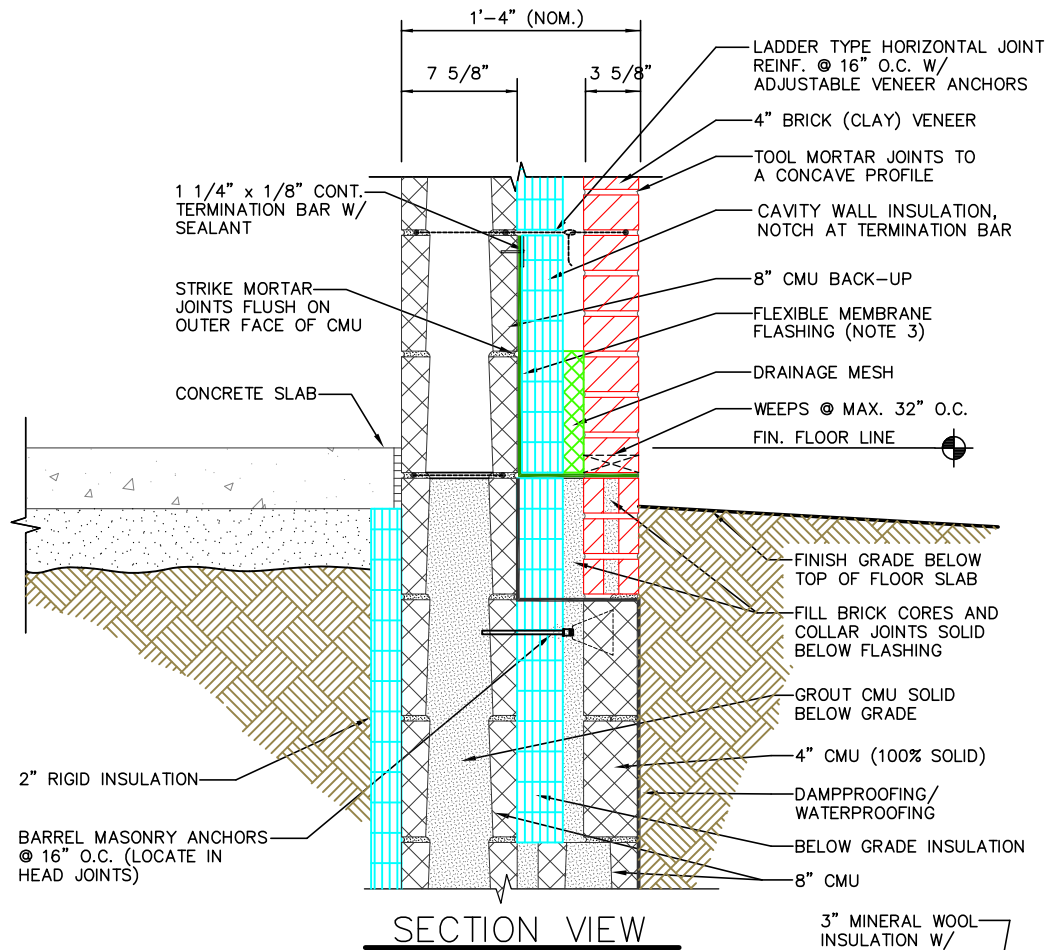


ISOMETRIC VIEW



ALTERNATE: 3" MINERAL WOOL INSULATION

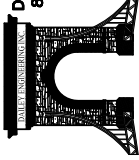
BASE DETAIL W/ VENEER BELOW GRADE

2B
A-2

- NOTES**
- 1) CMU BELOW GRADE SHALL BE MEDIUM OR NORMAL WEIGHT.
 - 2) SPECIAL CARE IN BRICK SELECTION MUST BE EXERCISED WHEN PLACING BRICK BELOW GRADE.
 - 3) FOR ADDITIONAL INFORMATION ON BASE FLASHING, SEE M.I.M. FAQ #22

<https://www.masonryinfo.org/architects/frequently-asked-questions/in-commercial-construction-how-should-the-horizontal-leg-of-flashing-at-the-base-of-the-wall-be-terminated-when-the-masonry-veneer-extends-below-grade/>

DAILEY ENGINEERING, INC.
8485 STEPHENSON ROAD
ONSTED, MI 49266
PH. # (517) 467-9000



111 MASONRY
Institute of Michigan

DETAIL SET CW.8 (CAVITY WALL)

IN CHARGE:	MIM
DRAWN:	M.W.F.
APPROVED:	T.A.D.
DATE:	08/08/2019
TITLE:	BASE DETAIL W/ VENEER BELOW GRADE
SHEET:	A-3.2