

ISOMETRIC VIEW

NOTE:
 "LOW SLOPE" ROOFS ARE DEFINED AS ROOFS WITH A SLOPE
 LESS THAN OR EQUAL TO 3:12 (14 DEGREES)

LADDER TYPE HORIZONTAL
 JOINT REINFORCEMENT @ 16"
 O.C. (UNLESS NOTED OTHER-
 WISE) W/ ADJUSTABLE TIES

2" (MIN. R-10) RIGID
 INSULATION

24" SPACING ON
 JOINT REINFORCEMENT
 AT THIS LOCATION ONLY

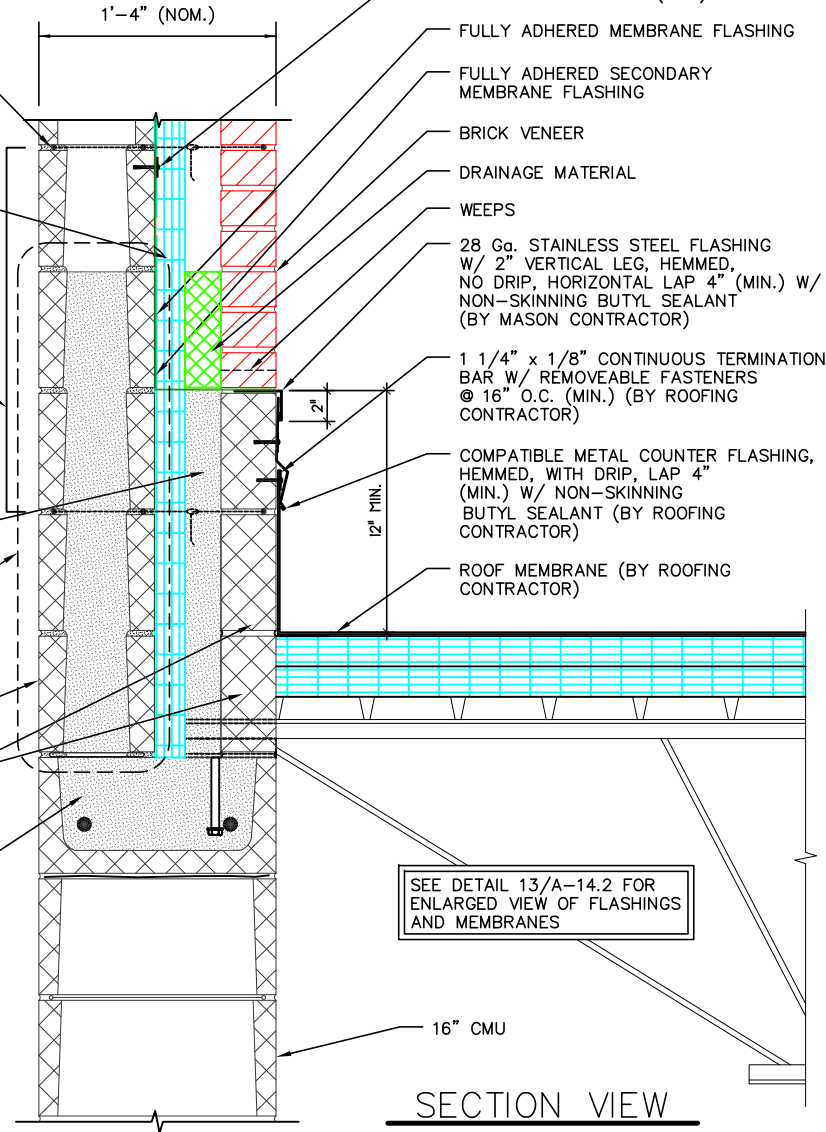
GROUT COLLAR SOLID

FOR COMPLETE AIR
 BARRIER TRANSITION, SOLID
 GROUT THIS CMU (SEE SHEET
 A-12 FOR ADDITIONAL
 INFORMATION)

8" CMU BACK-UP

4" CMU (SMOOTH
 FACE UNITS, 100%
 SOLID)

GROUT SOLID BOND
 BEAM



SEE DETAIL 13/A-14.2 FOR
 ENLARGED VIEW OF FLASHINGS
 AND MEMBRANES

SECTION VIEW

12 UPPER WALL /
 A-14.1 LOW ROOF FLASHING DETAIL
 2" RIGID INSULATION

DAILEY ENGINEERING, INC.
 8485 STEPHENSON ROAD
 ONSTED, MI 49266
 PH. # (517) 467-9000
 FAX # (517) 467-9010

111 MASONRY
 Institute of Michigan

DETAIL SET MW.8.RB.2 (2" HIGH PERFORMANCE CAVITY WALL)

IN CHARGE:	MIM
DRAWN:	M.W.F.
APPROVED:	T.A.D.
DATE:	11/04/2014
TITLE:	UPPER WALL / LOW ROOF FLASHING DETAIL
SHEET:	A-14.1

The decision to utilize this information is not within the purview of the MIM, and persons making use of this information do so at their own risk. MIM makes no representation or warranties, expressed or implied, with respect to the accuracy or suitability of this information. MIM and its members disclaim liability for damages of any kind, including any special, indirect, incidental, or consequential damages, which may result from the use of this information. This information is not to be interpreted as indicating compliance with, or waiver of, any provision of any applicable building code, ordinance, standard or law.